

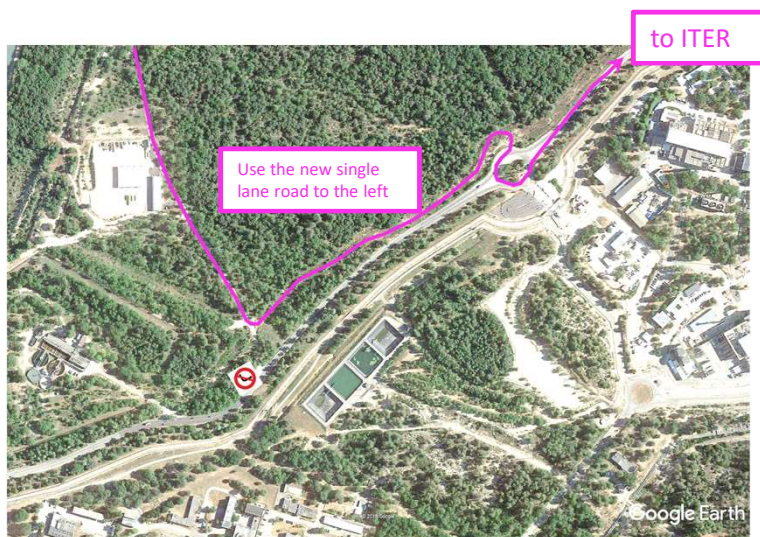
«Dam» route

Morning

6h45 – 9h30



Details of North side



Details of South side

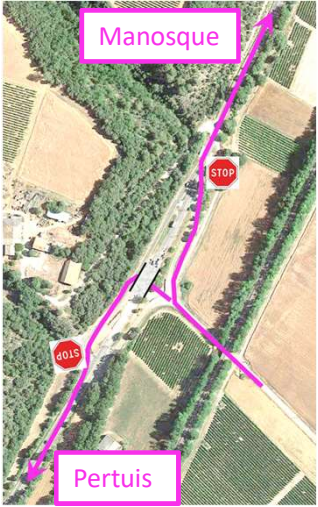
From Pertuis or Manosque,
follow « Barrage EDF de
Cadarache » on RD996 road,

Access control
6h45 – 9h30

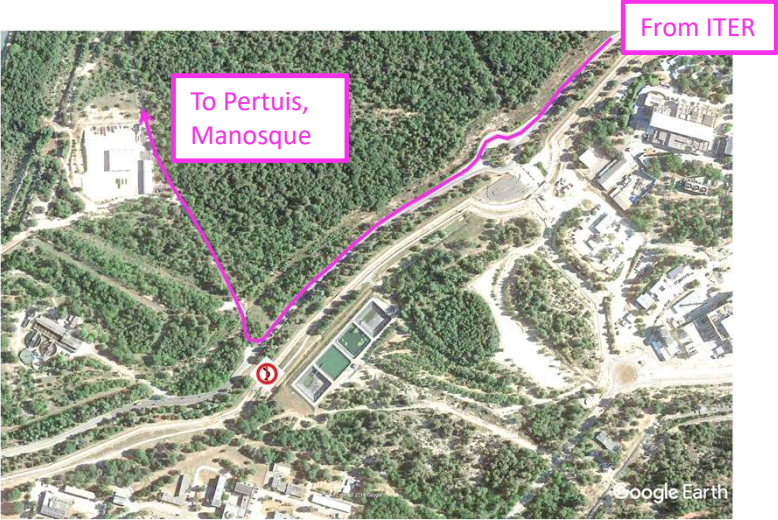
to ITER

INFO SMS : In normal operation, the dam route is open from 6.45am to 9.30am (morning) and from 4.30pm to 6.30pm (evening).
You will receive information by SMS on the conditions of use of the route (alert in case of closing, schedules, works ...)
Click on the link below, then select English language and then fill in the form to register:
<https://contact-everyone.orange-business.com/api/web/public/subscriptions/69977080-b3c5-4226-a516-ddd7ab677c8b>

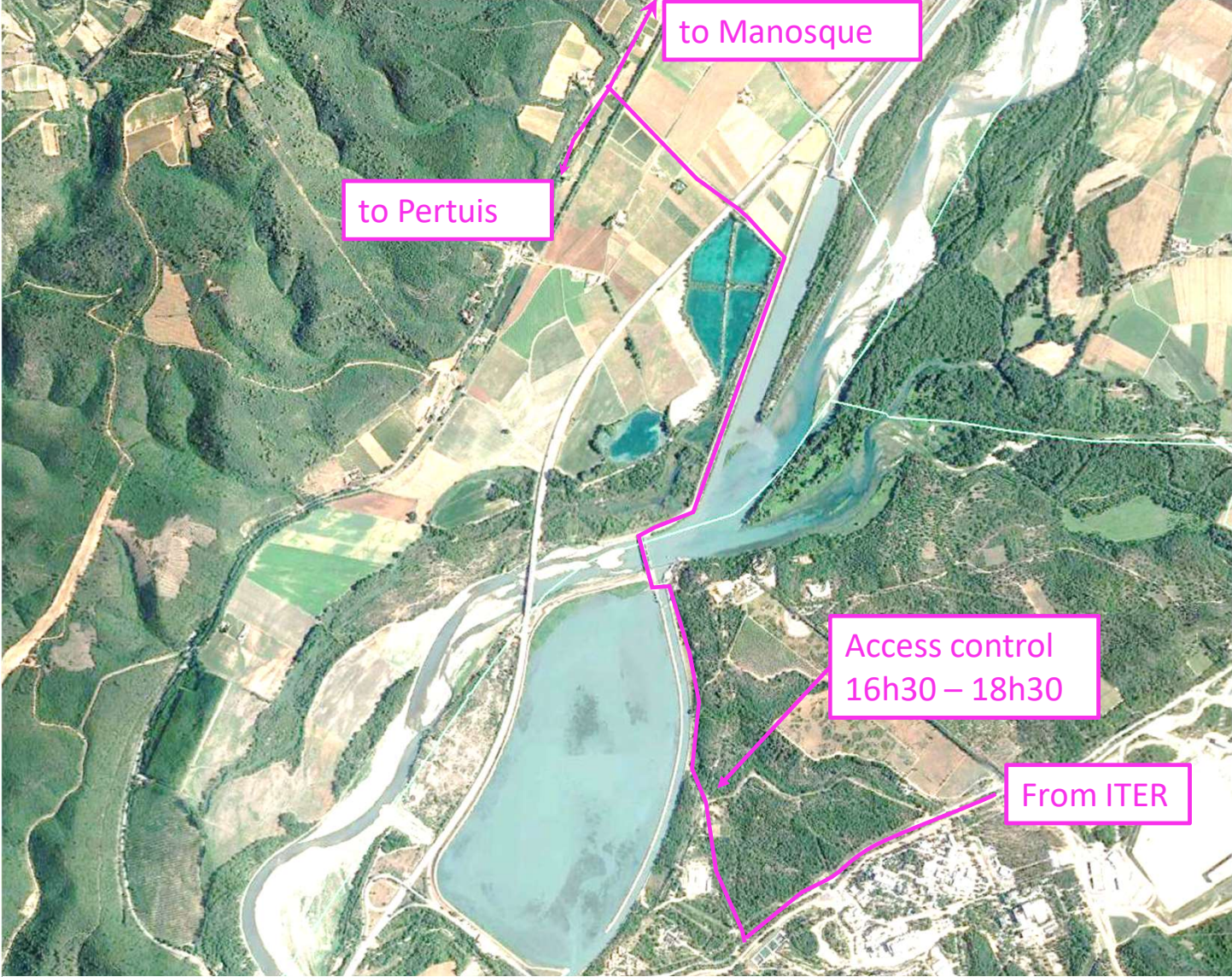
«Dam» route
Evening
16h30 – 18h30



Details of North side



Details of South side



INFO SMS : In normal operation, the dam route is open from 6.45am to 9.30am (morning) and from 4.30pm to 6.30pm (evening).
You will receive information by SMS on the conditions of use of the route (alert in case of closing, schedules, works ...)
Click on the link below, then select English language and then "subscribe me" to register:
<https://contact-everyone.orange-business.com/api/web/public/subscriptions/69977080-b3c5-4226-a516-ddd7ab677c8b>